

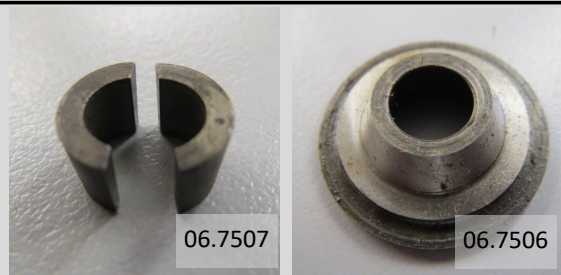


We are the only supplier of Commando & Dominator parts using the original factory drawings. Our products are mostly made in England and to original specification. We also offer Norton Rotary spares, factory service manuals and literature for **NORTON** and **TRIUMPH** motorcycles.

INSIST ON ANDOVER NORTON PARTS PACKAGED WITH OUR A.N. LOGO

NORTON DOMINATOR, ATLAS & COMMANDO VALVES, GUIDES, SPRINGS & ASSOCIATED PARTS

Part No.	Description	Machine
01.1111	Circlip for valve guide 850	850 Commando
06.1399	Valve spring seat	850 Commando
06.2725	Valve guide inlet 750 STD	500-750 Twins
06.2726	Valve stem seal (inlet) (1971 on)	750/850 Commando
06.2760	Valve guide inlet 750 (+.002)	500-750 Twins
06.2767	Valve guide inlet 750 (+.005)	500-750 Twins
06.2768	Valve guide inlet 750 (+.010)	500-750 Twins
06.2769	Valve guide inlet 750 (+.015)	500-750 Twins
06.3527	Valve guide exhaust 750 STD (T2011)	500-750 Twins
06.3529	Valve guide exhaust 750 (+.010)	500-750 Twins
06.3530	Valve guide exhaust 750 (+.015)	500-750 Twins
06.5024	Valve guide exhaust 850 STD (06.4125)	850 Commando
06.5025	Valve guide exhaust 850 (+.002)	850 Commando
06.5026	Valve guide exhaust 850 (+.015)	850 Commando
06.5027	Valve guide inlet 850 STD (06.4124)	850 Commando
06.5028	Valve guide inlet 850 (+.002)	850 Commando
06.5029	Valve guide inlet 850 (+.015)	850 Commando
06.7070	Valve Spring Set	650-850 Twins
06.7174	Valve Spring Set	500-600 Twins
06.7506	Valve spring collar (T186)	500-850 Twins
06.7507	Valve cotter (pr) (NMT187)	500-850 Twins
06.7545	Valve spring seat (T2073)	500-750 twins
06.7822	Valve spring (outer)(NM22838)	650-850 Twins
06.7823	Valve spring (inner)(NM22839)	650-850 Twins
06.7845	Insulator washer (NM23392)	500-850 Twins
NM19302	Valve spring (inner)	500 & 600 Twins
NM19303	Valve spring (outer)	500 & 600 Twins



For technical advice on these products, call 01264 359 565



Inlet valve guide 06.2725 with seal 06.2726 is recommended for all 500-750 twins

Please refer to our Website for Pricing:
www.andover-norton.co.uk



We are the only supplier of Commando & Dominator parts using the original factory drawings. Our products are mostly made in England and to original specification. We also offer Norton Rotary spares, factory service manuals and literature for **NORTON** and **TRIUMPH** motorcycles.

INSIST ON GENUINE FACTORY PARTS PACKAGED WITH THIS LOGO



NORTON DOMINATOR, ATLAS & COMMANDO VALVES, GUIDES, SPRINGS & ASSOCIATED PARTS

Part No.	Description	Machine
06.4034	Valve inlet (NM25501)	All Commandos
06.5115	Valve exhaust (NM25500) (06.3282)	All Commandos
06.6974	Valve inlet (NM 17221)	Twins after 1960 up to 650SS
06.7570	Valve exhaust (NMT2204)	Pre-Commando twins
06.7570	Valve inlet (NMT2010)	Twins with iron head
06.7884	Valve inlet (NM24330)	Atlas
06.7942	Valve inlet (NM25499)	Twins with ally head to 1960

Diameter = 1.5" (38.1mm)
Overall length = 3.939"

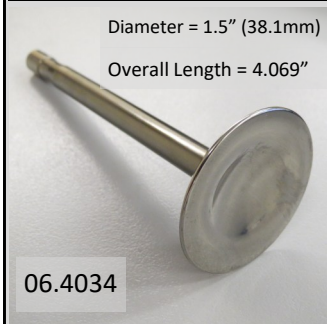


06.7884

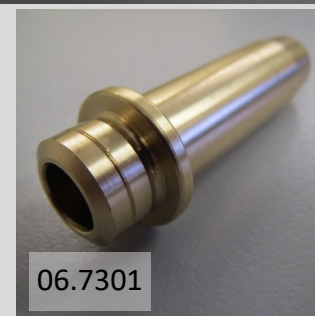
Diameter = 1.406" (35.7mm)
Overall length = 3.937"



06.6974



Part No.	Description	Machine
06.7288	Valve guide exhaust 850 STD Bronze	850 Commando
06.7289	Valve guide exhaust 850 (+.002) Bronze	850 Commando
06.7290	Valve guide exhaust 850 (+.004) Bronze	850 Commando
06.7291	Valve guide exhaust 850 (+.006) Bronze	850 Commando
06.7292	Valve guide inlet 850 STD Bronze	850 Commando
06.7293	Valve guide inlet 850 (+.002) Bronze	850 Commando
06.7294	Valve guide inlet 850 (+.004) Bronze	850 Commando
06.7295	Valve guide inlet 850 (+.006) Bronze	850 Commando
06.7296	Valve guide exhaust 750 & Dommie STD Bronze	500-750 Twins
06.7297	Valve guide exhaust 750 & Dommie (+.002) Bronze	500-750 Twins
06.7298	Valve guide exhaust 750 & Dommie (+.004) Bronze	500-750 Twins
06.7299	Valve guide exhaust 750 & Dommie (+.006) Bronze	500-750 Twins
06.7300	Valve guide inlet 750 STD Bronze	500-750 Twins
06.7301	Valve guide inlet 750 (+.002) Bronze	500-750 Twins
06.7302	Valve guide inlet 750 (+.004) Bronze	500-750 Twins
06.7303	Valve guide inlet 750 (+.006) Bronze	500-750 Twins



NOW BUY GENUINE NORTON FACTORY SPARES FROM OUR SALES COUNTER IN ANDOVER, HAMPSHIRE

Order on-line: www.andover-norton.co.uk tel: 01264 359 565 email: office@andover-norton.co.uk